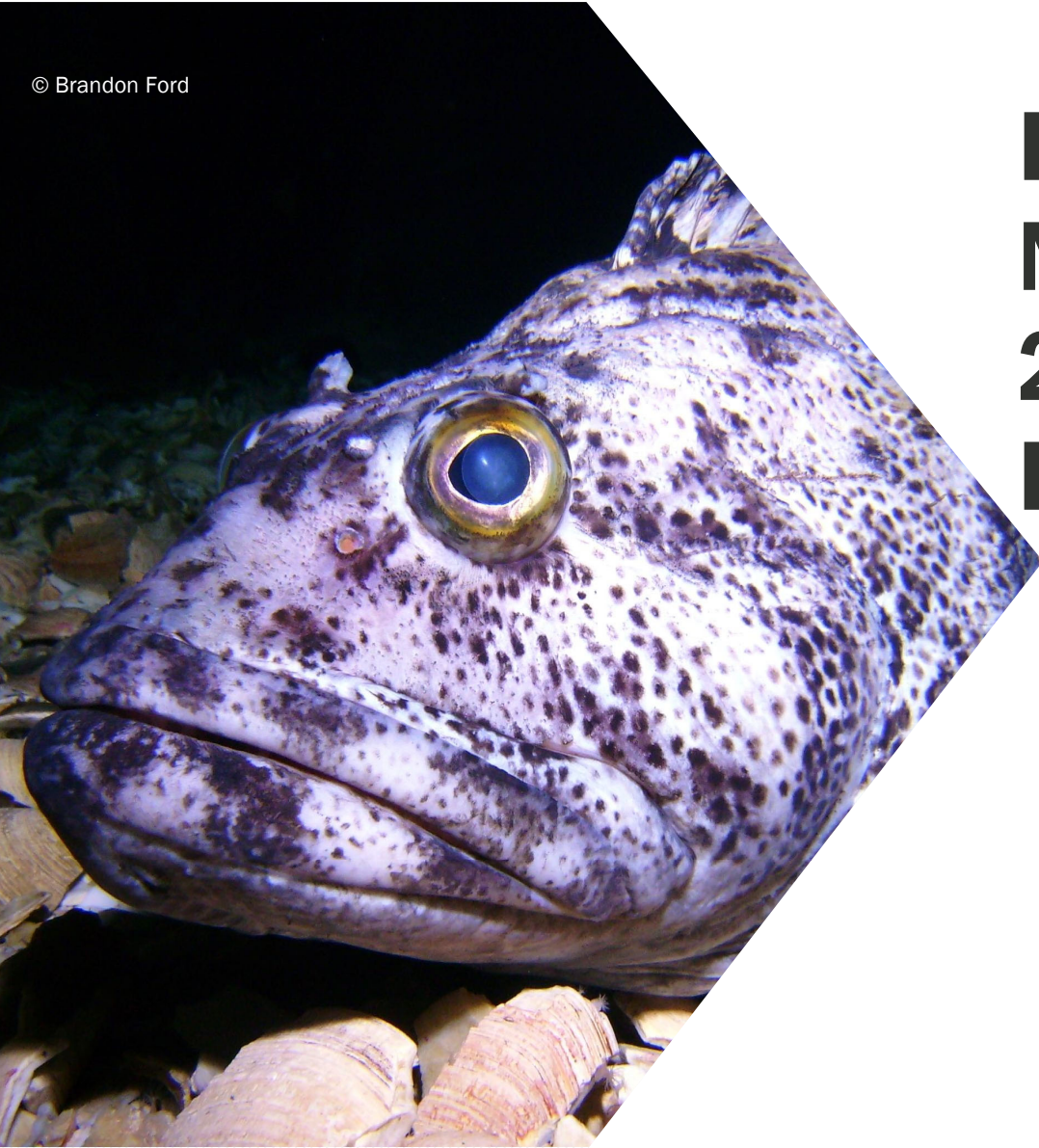


© Brandon Ford



# Exhibit B: Commercial Nearshore Update & 2025 Groundfish Regulations

**Lynn Mattes**

**Marine Resources Program**

**13 Dec 2024**



**Oregon Department  
of Fish and Wildlife**



# Nearshore Fishery Report



Attachment 4 is the annual report to the Commission on the commercial nearshore fishery

Required by ORS 508.953



Informational

No Commission action

Staff available for questions



2023

## Oregon Commercial Nearshore Fishery Data Update



Oregon Department of Fish and Wildlife  
Marine Resources Program  
2040 SE Marine Science Drive  
Newport, OR 97365  
(541) 867 - 4741

<http://www.dfw.state.or.us/MRP/>

Cathleen D Vestfals  
Lindsey L Noordman

June 2024



Lynn Mattes' photo

# 2025 Groundfish Regulations

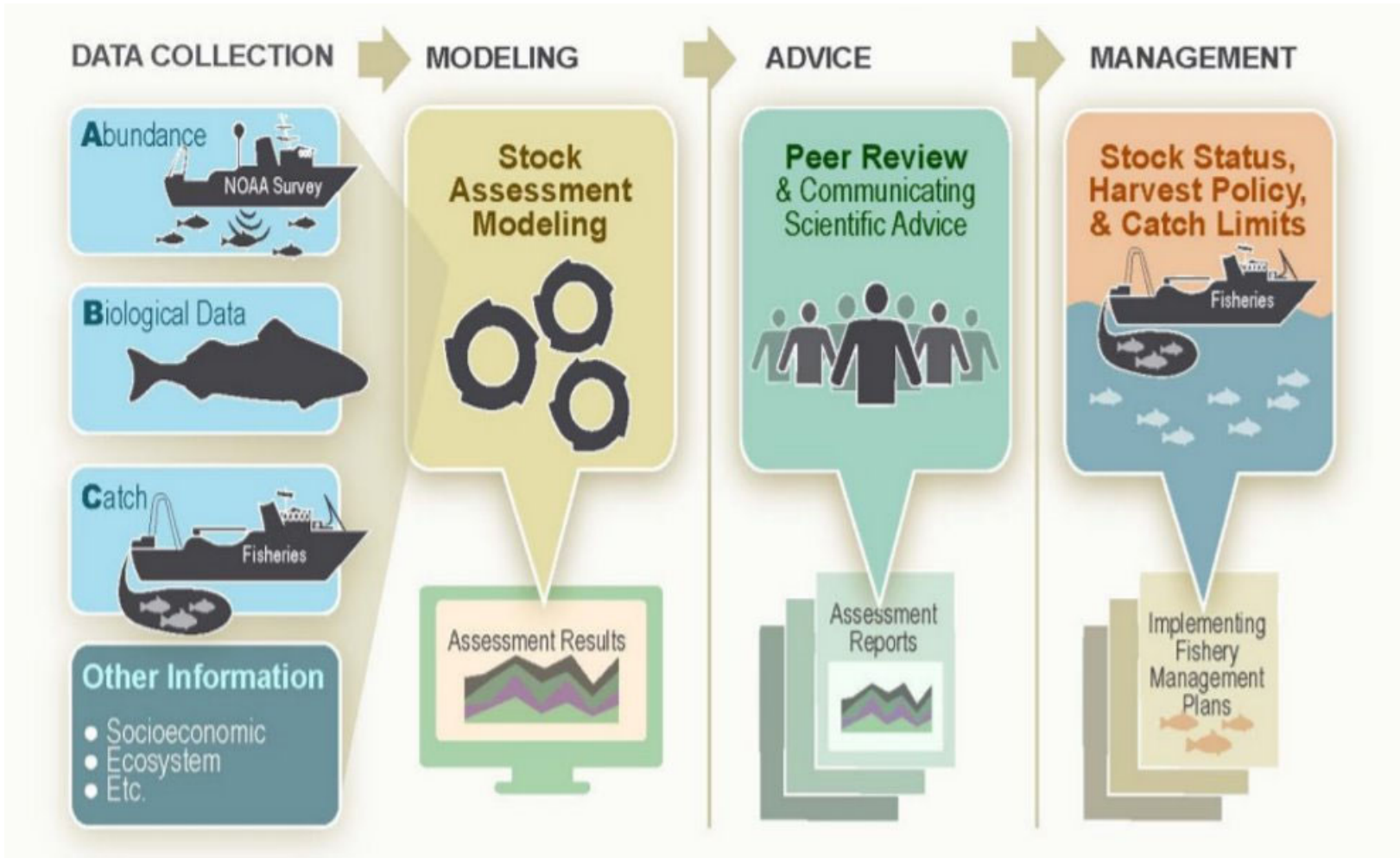


# 2025 Groundfish Regulations

- 🐟 2025 Federal Regulations
- 🐟 State Harvest Guidelines (HGs)
- 🐟 Commercial Management Measures
- 🐟 Recreational Management Measures







# Setting Sustainable Groundfish Catch Limits



Graphic courtesy of NMFS

# 2025 Federal Annual Catch Limits



-  2023 assessments for black and canary rockfish
-  Black rockfish “healthy” but scale of biomass lower than previously estimated
-  Canary rockfish are in “precautionary zone”, scale of biomass lower than previously estimated
-  Lower allowable catch limits for both species

Species	2024 (mt)	2025 (mt)	2026 (mt)	% decrease 2024 to 2025
Black Rockfish (OR) ACL	512	344	350	-33%
Canary Rockfish (coastwide) ACL	1,267	571	573	-55%
OR recreational share	62.9	26.0	26.1	-59%



Jana Nichols' Photo

# 2025 Federal Regulations

Developed based on the best scientific information available (BSIA)



ODFW and the public participate in the Pacific Fishery Management Council's 2-year process



Many opportunities for public input

Staff recommend adopting the federal regulations by reference, without modification



PFMC SSC Meeting  
Lynn Mattes' photo

# State Harvest Guidelines (HGs)



State allocates federal limits to commercial and recreational (including Tribal) fisheries

Proportions unchanged since early 2000s

Species/Mgmt. Group (2025 Federal Catch Limit)	Sector	Allocation %	2024 HG (mt)	Staff Recommended 2025 HG (mt)
Black Rockfish	Commercial	24.0%	122.9	82.4
	Recreational	76.0%	389.1	261.1
Blue & Deacon Rockfish	Commercial	18.6%	15.2	14.8
	Recreational	81.4%	66.7	64.9
Nearshore Rockfish Complex	Commercial	51.3%	16.1	15.4
	Recreational	48.7%	15.2	14.7
Cabezon	Commercial	64.3%	31.6	31.0
	Recreational	35.7%	17.6	17.2
Greenling	Commercial	75.1%	98.4	96.6
	Recreational	24.9%	32.6	32.0

# Public Notification and Input Process for 2025



## Recreational Public Meetings

Coastal ports, Salem, & webcast  
Fall 2023 (3) & summer 2024 (4)  
Marine Sportfishing Advisory Committee



## Commercial Public Meetings

North Coast, South Coast & webcast  
Fall 2023 (2) & 2024 (2)  
Commercial Nearshore Advisory Panel



## Saltwater Sportsman Show

Salem, February 2024  
One-on-one conversations



## Phone calls, e-mails, office visits

Throughout the year  
One-on-one conversations



# Commercial Nearshore Fishery Management Measures



# Commercial Management Measures



## Objectives

- Maximize opportunity while not exceeding catch limits
- Predictable, year-round season
- Accommodate seasonal market demand for black rockfish



## Management Tools

- Limit entry, caps total effort
- Bi-monthly trip limits by species, stabilizes season
- Depth/area closures
- Species-specific prohibitions
- Gear restrictions



Lynn Mattes' photo

# 2024 Season Recap



## Projected to be under state HGs

Except Blue/Deacon Rockfish

- Recreational projected to be under its HG
- No conservation concern

	2024 Commercial HG (mt) (allowable harvest)	Projected Harvest (mt) (% HG)
Black Rockfish	122.9	94.0 (76%)
Blue/Deacon Rockfish	15.2	15.3 (101%)*
Cabezon	31.7	17.7 (56%)
Greenling	98.4	14.9 (15%)
Other Nearshore Rockfish	16.1	8.9 (55%)



ODFW Marine Reserves Photo

# 2025 Commercial Nearshore Trip Limits



Trip limits distribute harvest throughout the year

Limits the amount of fish (by species) a vessel can land in each **2-month period**

**Staff Recommended Trip Limits for 2025**

Species/group	2024 Initial Trip Limit (and after in-season adj.) in Pounds	Recommended 2025 Trip Limit in Pounds
Black Rockfish		
Jan - Feb	1,800	<u>1,200</u>
Mar - Apr	2,100	<u>1,200</u>
May - Jun	2,400	<u>1,600</u>
Jul - Aug	2,400 (2,700)	<u>1,600</u>
Sep - Oct	2,100 (2,700)	<u>1,200</u>
Nov - Dec	1,800 (2,700)	<u>1,200</u>
Blue/Deacon Rockfish	1,500	1,500
Other Nearshore RF	450 (650)	450
Cabezon	1,500 (2,500)	1,500
Greenling	1,200 (2,000)	1,200



## Projected 2025 Impacts, in mt

	Commercial HG	Projected impacts (% HG)
Black Rockfish	82.4	85.9 (104%)
Blue and Deacon Rockfish	14.8	13.7 (93%)
Cabezon	31.0	19.8 (64%)
Greenling	96.6	13.7 (14%)
Other Nearshore Rockfish	15.4	10.4 (67%)



Lynn Mattes' photo

# Recreational Fishery Management Measures



# Recreational Management Measures

## Objectives



- Maximize opportunity while not exceeding catch limits
- Year-round fishing opportunity
- Minimize inseason changes & regulatory complexity
- General marine bag limit of > 4



## Management Tools

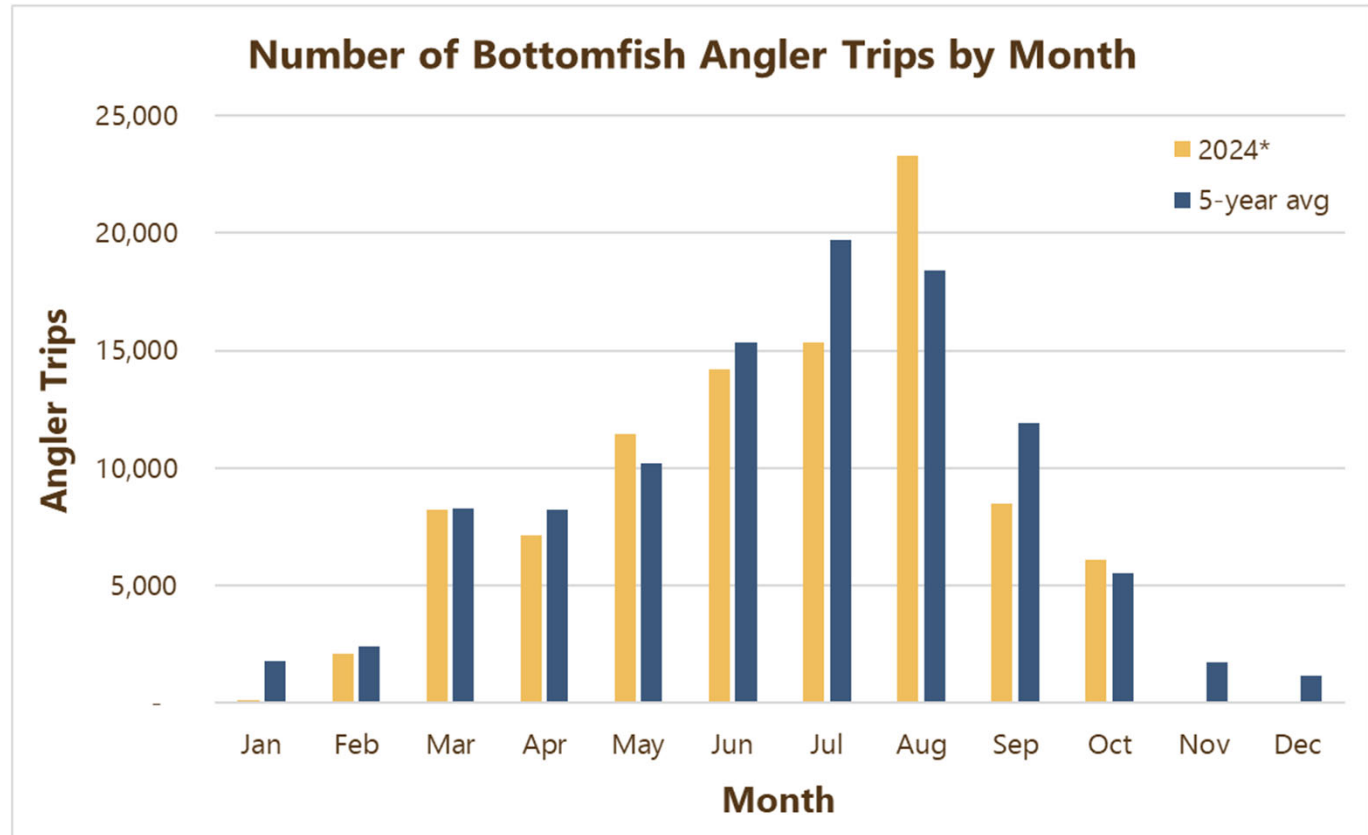
- Bag limit & fish length limit
- Depth/area closures
- Species-specific prohibitions
- Gear restrictions
- Mandatory descending devices



ODFW Marine Research Photo

# 2024 Season Recap

Continued high effort, approximately 100,000 angler trips



\*Data for 2024 is preliminary through October

# 2024 Season Recap



 **No inseason actions taken**

 Impacts within HGs, except nearshore rockfish

- Commercial projected under its HG
- No conservation concern

	Recreational HG (mt)	Projected Impacts in mt (% of HG)
Black Rockfish	389.1	283.3 (73%)
Blue/Deacon Rockfish	66.7	32.1 (48%)
Cabezon	17.6	11.9 (68%)
Greenling	32.6	21.5 (66%)
Other Nearshore Rockfish	15.2	17.3 (114%)



ODFW Marine Reserves Photo



# Management Measures Considered



## Seasonal Closure

- Would need to close July and/or August to get any real “savings”
- Months of highest effort and landings



## Sub-bag limit for black rockfish

- Discards of black rockfish to catch something else to fill bag
- Identification concerns with blue/deacon rockfish



## Seasonal bag limit change

- Weather considerations
- When school is out, more families on vacation, more potential anglers
- Other fishing opportunities available

# Staff Recommended Season Structure & Bag Limits

- Open year round at all-depths
- Jan-Jun: 4 fish bag limit, with 1 canary sub-bag, no cabezon
- Jul-Dec: 5 fish bag limit, with 1 canary and 1 cabezon sub-bag limits
- Lingcod: 2 fish bag limit
- Longleader gear: 10 fish bag limit, with 1 canary sub-bag
- 25 flatfish, other than Pacific halibut
- New in 2025: 10 fish bag limit for sablefish
- Quillback and yelloweye rockfishes prohibited



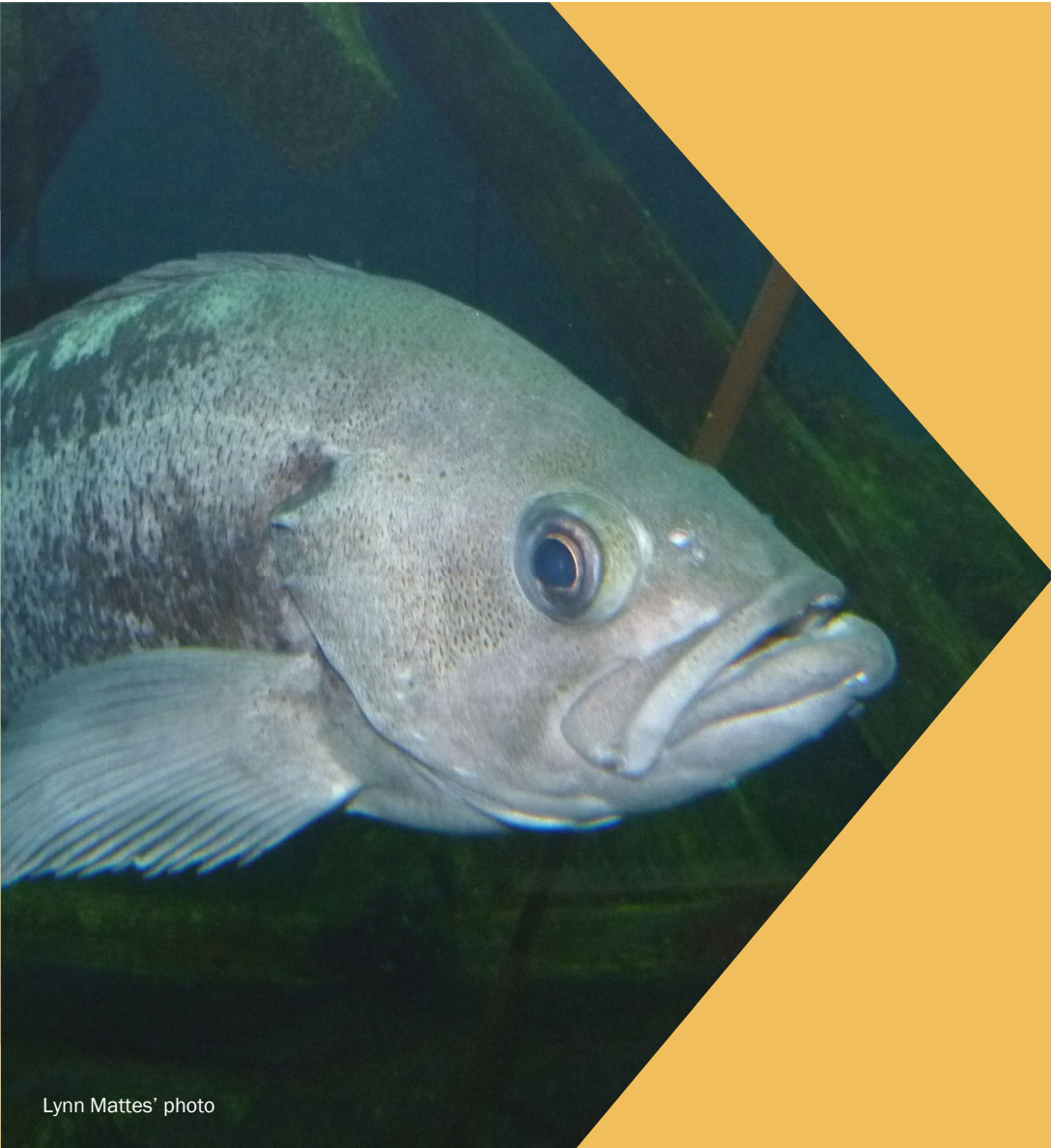
ODFW Marine Reserves Photo

# Projected 2025 Impacts

	Recommended 2025 Recreational HG	Projected 2025 impacts (% of HG), assuming no inseason action
Black Rockfish	261.1	290.7 (111%)
Blue and Deacon Rockfish	64.9	21.3 (33%)
Cabazon	17.2	20.0 (116%)
Canary Rockfish	26.0 (federal)	39.7 (153%)
Greenling	32.0	21.6 (67%)
Other Nearshore Rockfish	14.7	13.8 (94%)
Yelloweye Rockfish	6.9 (federal)	6.6 (95%)



ODFW Marine Reserves Photo



Lynn Mattes' photo





# Efforts to Inform Future Assessments

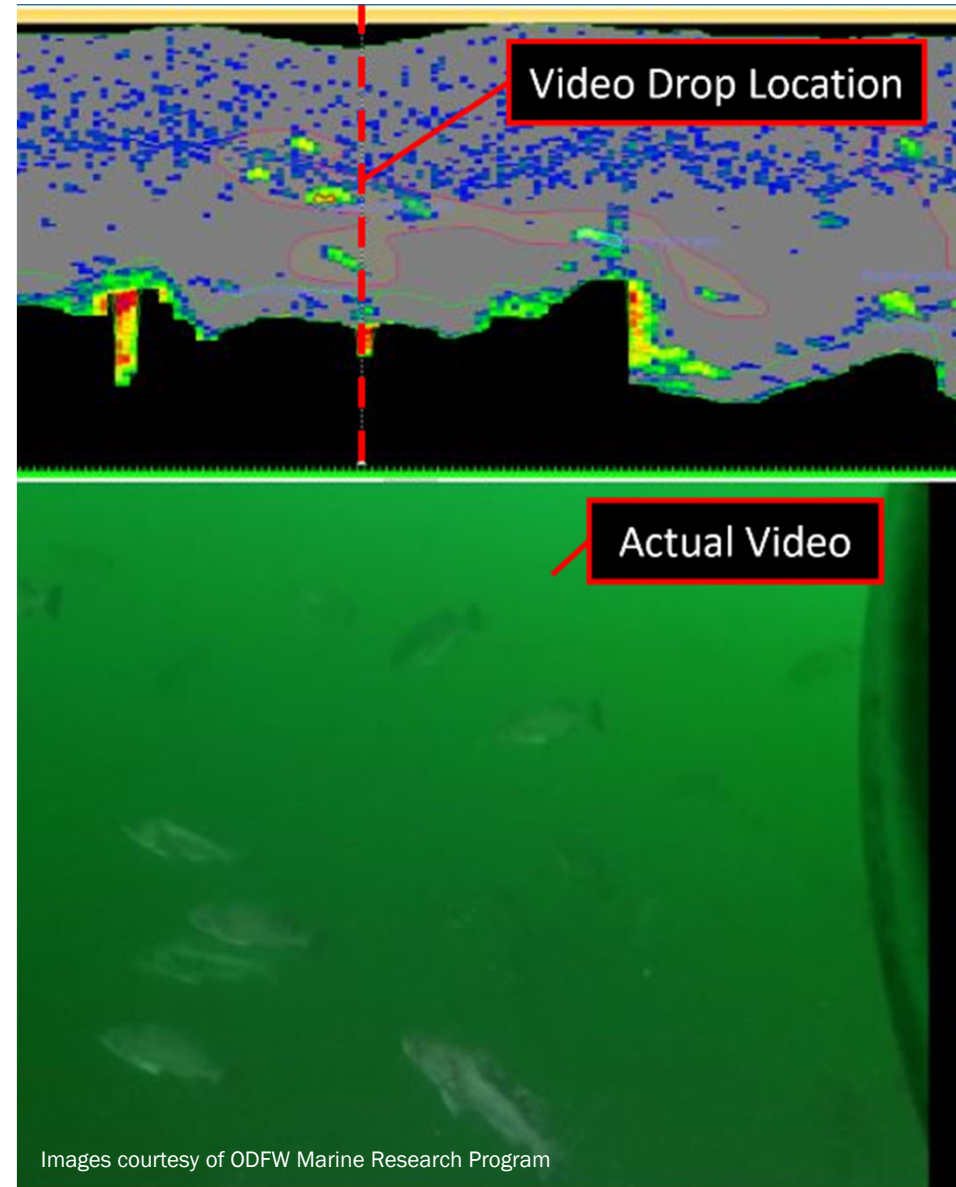


# Nearshore Rockfish Survey



## Trying to repeat in 2025

-  Provide additional fishery-independent data
-  More surveys = less uncertainty
-  New assessment would be in 2027 (at the soonest) to inform 2029 & beyond
-  Proposed Ocean Endorsement will help fund long term



Images courtesy of ODFW Marine Research Program

# Options for 2025 Groundfish Regulations



Adopt staff recommendations, as reflected in the draft OARs



Modify staff proposal for one or more items



Status quo



© Brandon Ford

# Questions



Oregon Department  
of Fish and Wildlife



Thank you to Melanie Bukovec, Troy Buell, Christian Heath, & Dr. Cathleen Vestfals for assisting with this exhibit.



## Draft Motion

### **2025 Groundfish Fisheries Regulations**

I move to amend groundfish regulations as proposed by staff in Attachment 3.

**Effective Date:** January 1, 2025